

# MALE EMPOWERMENT COLLABORATIVE (MEC)

*Male Empowerment Collaborative is for men who wish to embark on a journey of personal achievement, discovery, and empowerment.*

## Goals

Increase retention and graduation rates of all males on campus

Increase the retention rates of underrepresented minority (URM) and non-URM males by 3% per year over the next four years

Assist URM and non-URM males in improving their GPAs .2 points higher than the previous semester until they graduate

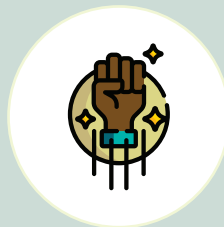
Enhance URM and non-URM male connections to campus life

Teach URM and non-URM males to take initiative to make positive changes

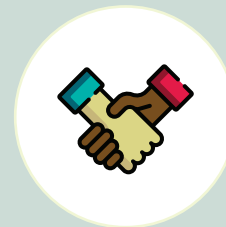
## Services



*Real Talk Sessions*



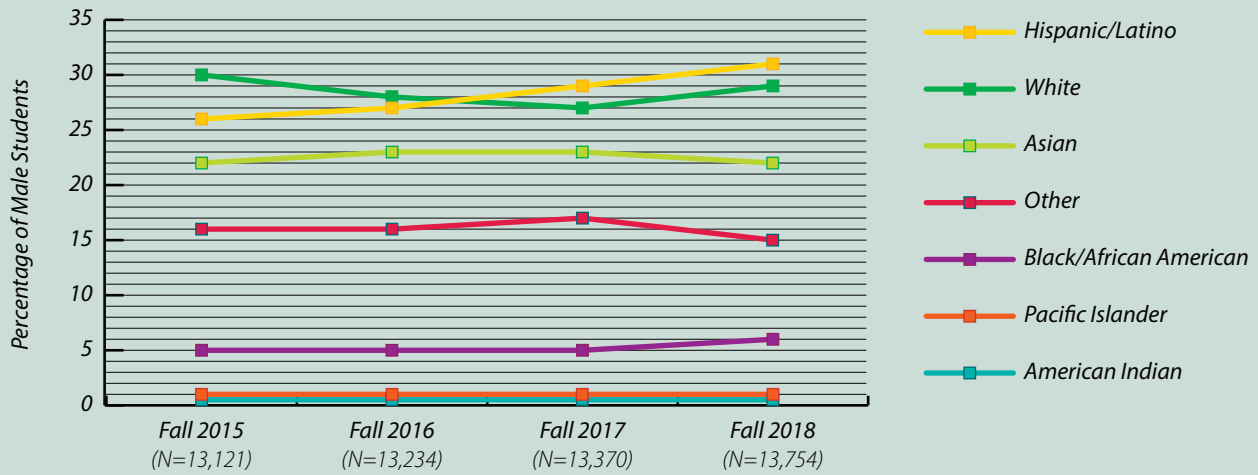
*Men of Honor  
(Celebrating Our Heroes)*



*Men Mentoring Men*

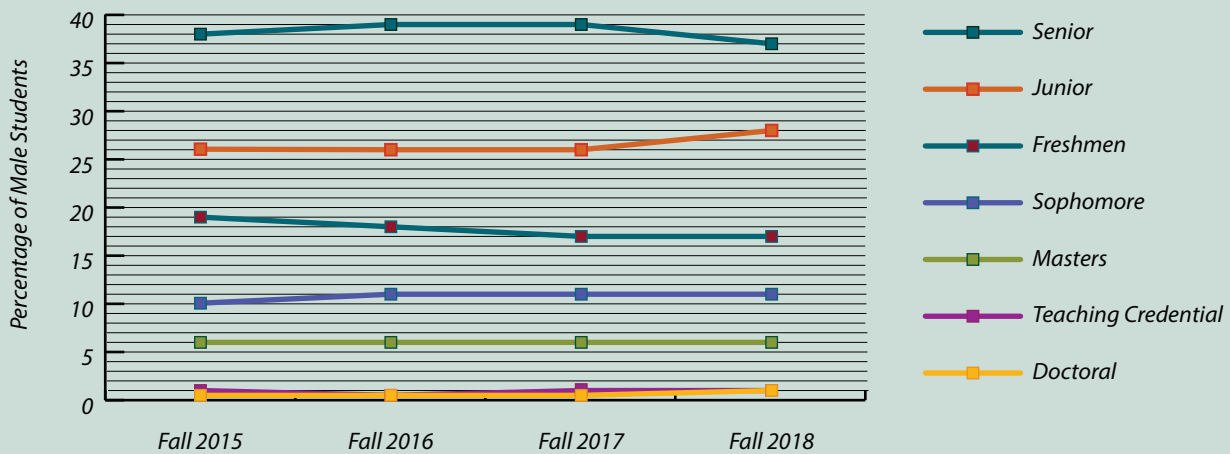
## Demographics of Males Students

### Ethnicity

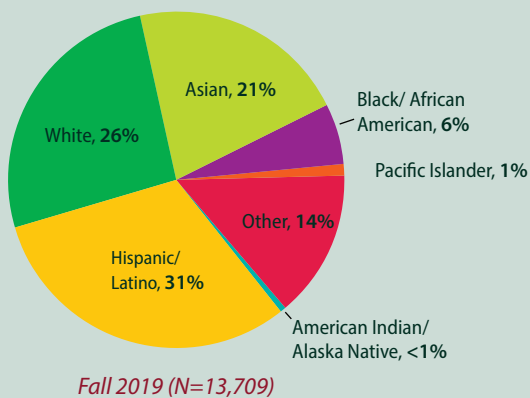


Note: Other includes two or more ethnicities, unknown, and non-resident alien.

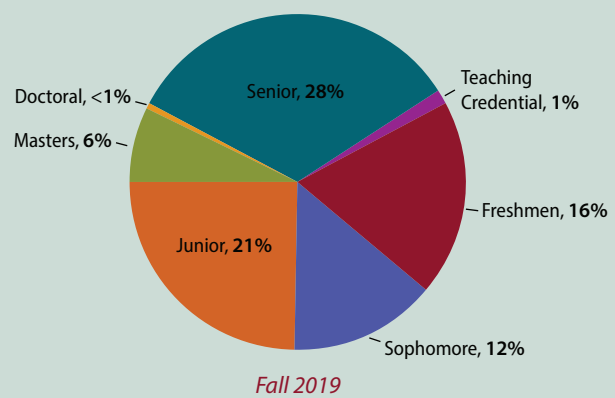
### Class Level



### Ethnicity



### Class Level

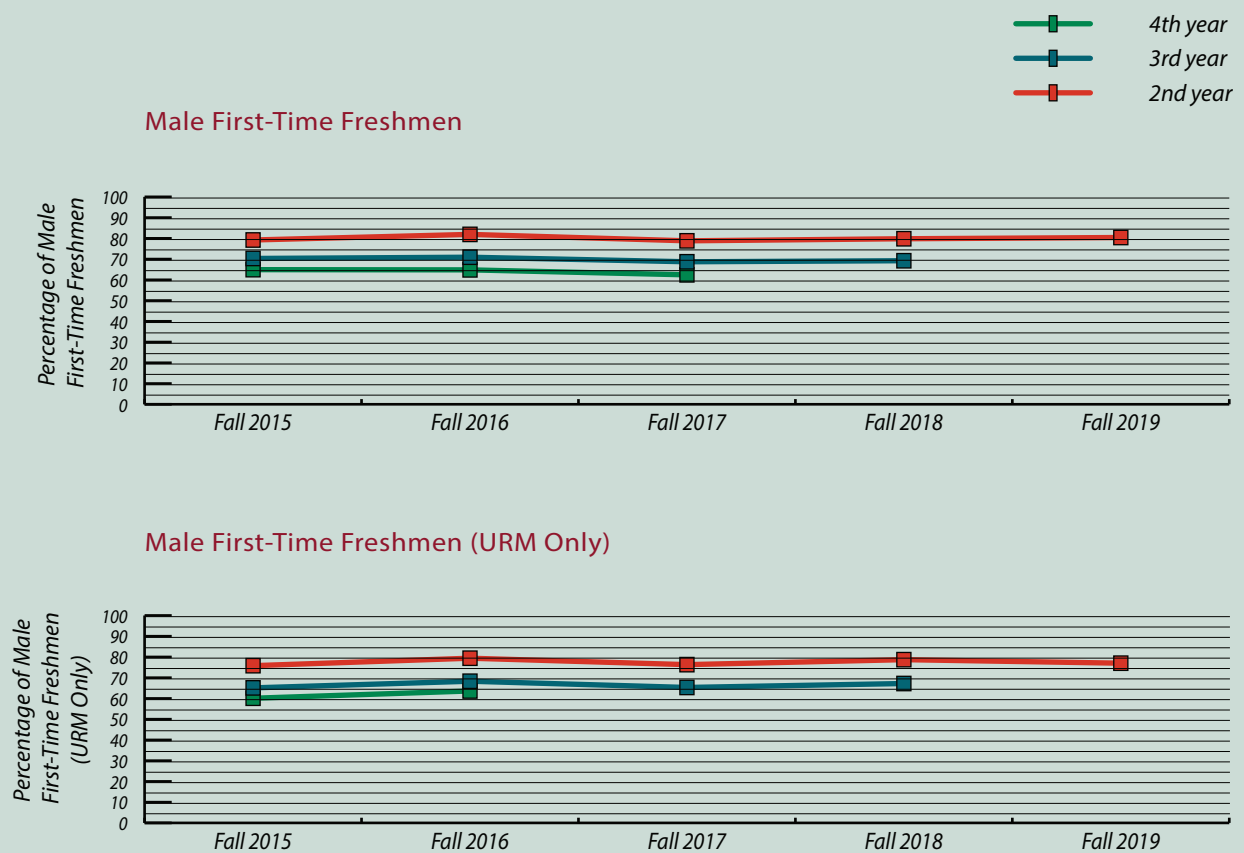


## Key Performance Indicators

	Fall 2017 (N=13,370)	Spring 2018 (N=12,783)	Fall 2018 (N=13,754)	Spring 2019 (N=12,960)	Fall 2019 (N=13,709)	Spring 2020 (N=12,934)
Average Unit Load	12.60	12.36	12.57	12.46	12.73	12.42
Average Term Load	2.844	2.828	2.844	2.778	2.778	3.019
Average Sac State GPA	2.929	2.930	2.922	2.902	2.889	3.014
Average Cumulative Load GPA	2.950	2.953	2.952	2.941	2.931	3.013

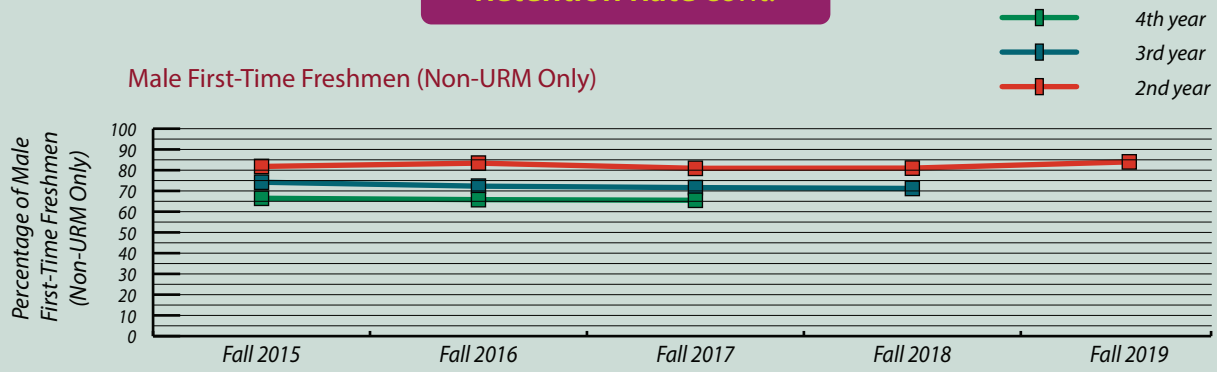
## Retention Rate

<https://www.csus.edu/president/institutional-research-effectiveness-planning/dashboards/student-success.html>



Note: URM or Underrepresented Minority are identified as African American, Hispanic, Native American and Pacific Islander.

## Retention Rate cont.



Note: Non-URM are identified as Asian, Two or More Races, Unknown, and White.

### Male Transfers - 2<sup>nd</sup> Year Retention

Cohort	All Male	URM Male	Non-URM Male
Fall 2015	89.4%	90.0%	89.1%
Fall 2016	89.7%	89.2%	89.9%
Fall 2017	89.1%	90.5%	88.5%
Fall 2018	88.5%	87.4%	89.1%
Fall 2019	90.6%	88.7%	91.9%

## Graduation Rate

